

2011-2012 SFUO Budget

Budget FÉUO 2011-2012



Sarah Jayne King

VP Finance

V.-p. aux finances



Ordre du jour / Agenda

- Aperçu/ Outline
- Revenus / Revenues
 - Cotisations /Levies
 - Commerces/Businesses
- Dépenses / Expenditures
 - Committed funds
 - Services/Services
- Budget Balance
- Questions
- Approbation / Approval
- Subventions Généraux / General Subsidies



Comment ça fonctionne How it works

students
étudiant.e.s

SFUO
FÉUO

External
Levied Groups
Groupes à
l'externe

SFUO Funds
Fonds FÉUO

- Semaine 101
Week
- Administration
- Ect/Etc.

SFUO Services FÉUO

- Clubs
- 12 services

U-Pass

Health Plan
Régime
d'assurance
maladie



Répartition | Breakdown

2010-2011

	Temps complete - Full Time			Temps partiel -Part Time		
	Printemps-Spring	Automne Fall	Hiver Winter	Printemps Spring	Automne Fall	Hiver Winter
Librarie Agora Bookstore	9.57 \$	9.57 \$	9.57 \$	4.79 \$	4.79 \$	4.79 \$
Centre des étudiants ayant un handicap Centre for students with Disabilities	1.10 \$	1.10 \$	1.10 \$	0.55 \$	0.55 \$	0.55 \$
Banque Alimentaire Food Bank	1.01 \$	1.01 \$	1.01 \$	0.51 \$	0.51 \$	0.51 \$
Centre de recours étudiant Student Appeal Center	2.18 \$	2.18 \$	2.18 \$	1.08 \$	1.08 \$	1.08 \$
Centre de bilinguisme Bilingualism Center	1.04 \$	1.04 \$	1.04 \$	0.52 \$	0.52 \$	0.52 \$
Centre de fierté Pride Center	1.24 \$	1.24 \$	1.24 \$	0.60 \$	0.60 \$	0.60 \$
Centre de ressources des femmes Women's Resource Center	1.02 \$	1.02 \$	1.02 \$	0.51 \$	0.51 \$	0.51 \$
Centre d'entraide Peer help	1.24 \$	1.24 \$	1.24 \$	0.60 \$	0.60 \$	0.60 \$
CHUO FM	4.30 \$	4.30 \$	4.30 \$	2.26 \$	2.26 \$	2.26 \$
Legal Aid Clinic	2.84 \$	2.84 \$	2.84 \$	1.60 \$	1.60 \$	1.60 \$
Clubs	1.06 \$	1.06 \$	1.06 \$	0.53 \$	0.53 \$	0.53 \$
Refugee Student	0.00 \$	1.27 \$	0.00 \$	0.00 \$	1.27 \$	0.00 \$
FEUO SFUO	24.73 \$	24.73 \$	24.73 \$	9.11 \$	9.11 \$	9.11 \$
Fond d'accessibilité Accessibility Fund	1.10 \$	1.10 \$	1.10 \$	0.55 \$	0.55 \$	0.55 \$
Fond générale SVE SLS General Fund	0.60 \$	0.60 \$	0.60 \$	0.33 \$	0.33 \$	0.33 \$
FULCRUM	2.93 \$	2.93 \$	2.93 \$	1.58 \$	1.58 \$	1.58 \$
GRIPO OPIRG	3.47 \$	3.47 \$	3.47 \$	3.47 \$	3.47 \$	3.47 \$
Maison Internationale International House	0.60 \$	1.93 \$	0.60 \$	0.33 \$	1.64 \$	0.33 \$
Centre de raccompagnement Foot Patrol	1.63 \$	1.63 \$	1.63 \$	1.17 \$	1.17 \$	1.17 \$
Productions Zoom Productions	1.24 \$	1.24 \$	1.24 \$	0.60 \$	0.60 \$	0.60 \$
Centre d'équité Equity Centre	2.67 \$	2.67 \$	2.67 \$	1.33 \$	1.33 \$	1.33 \$
LA ROTONDE	2.93 \$	2.93 \$	2.93 \$	1.58 \$	1.58 \$	1.58 \$
Counseling Services	2.10 \$	2.10 \$	2.10 \$	1.04 \$	1.04 \$	1.04 \$
Career Services	1.64 \$	1.64 \$	1.64 \$	0.81 \$	0.81 \$	0.81 \$
Canadian Federation of Students Fédération Canadienne des étudiantes et étudiants	4.01 \$	4.01 \$	4.01 \$	2.00 \$	2.00 \$	2.00 \$
Canadian Federation of Students Fédération Canadienne des étudiantes et étudiants - Ontario	3.34 \$	3.34 \$	3.34 \$	1.67 \$	1.67 \$	1.67 \$
Développement Durable Sustainable Development	2.00 \$	2.00 \$	2.00 \$	1.00 \$	1.00 \$	1.00 \$
TOTAL	81.59 \$	84.19 \$	81.59 \$	40.12 \$	42.69 \$	40.12 \$

<http://www.registraire.uottawa.ca/Default.aspx?tabid=3624#7>



Revenus / Revenues

	Budget 2011	Actuals/ Actuels 2011	Budget 2012
Revenues			
Cotisations/Levies (1)	3,690,633	3,486,320	3,872,603
Commerces/ Businesses (2)	317,311	180,939	261,245
Régime d'assurance/ Health Plan	2,970,000	2,127,072	2,500,000
Laisser-passé Universel/Universal Bus Pass	7,920,915	7,310,684	7,500,000
Total Revenues	14,898,859	13,105,015	14,133,848



Cotisations / Levies (1)

	Budget 2011	Actuals 2011	Budget 2012
Agora	\$630,087	\$589,993	\$658,914
Food Bank Banque alimentaire	\$79,259	\$75,403	\$82,844
Centre de bilinguisme	\$79,270	\$76,730	\$84,765
pride Centre de la fierté	\$93,165	\$88,764	\$98,007
CRESAC	\$155,757	\$146,826	\$162,668
WRC-CRF	\$79,827	\$75,498	\$83,421
Peer Help Centre d'entraide	\$83,766	\$77,410	\$85,007
CEHR	\$188,056	\$177,089	\$196,824
CSD Centre des étudiants ayant un handicap	\$72,717	\$80,427	\$88,794



Cotisations/ Levies (1)

	Budget 2011	Actuals 2011	Budget 2012
Clubs	\$70,073	\$65,311	\$73,108
Développement durable/ Sustainable Development	\$131,686	129,229	\$137,768
Étudiant réfugié/ Student Refugee	\$42,374	\$40,436	\$44,415
Fond d'accessibilité/ Accessibility Fund	\$72,717	\$67,776	\$75,794
FÉUO/SFUO	\$1,567,869.00	\$1,476,806	\$1,639,464
Fond général SVÉ/ Maison Internationale/ International House	\$40,222	\$38,000	\$42,205
Raccompagnement/ Foot Patrol	\$96,837	\$92,308	\$101,550
Productions Zoom Productions	\$93,165	\$88,764	\$98,007
	\$113,785	\$105,549	\$119,048



Commerces Businesses (2)

Budget 2011 Actuals 2011 Budget 2012

1848	\$4,080	(\$22,610)	\$874
Agora	\$304,780	\$202,355	\$225,013
Café			
Alternatif	(\$2,028)	(\$20,093)	(\$12,848)
Pivik	\$10,479	\$21,287	\$48,206
Total	\$317,311	\$180,939	\$261,245



Dépenses / Expenditures

Dépenses/ Expenses	Budget 2011	Actuels/ Actuals 2011	Budget 2012
Fonds engagés/ Committed Funds (3)	1,529,516	1,516,536	1,612,322
Fonds référendums/ Referendum funds (4)	2,129,466	1,781,970	2,250,600
Régime d'assurance santé Health Plan	2,970,000	2,127,072	2,500,000
U-PASS	7,920,915	7,310,684	7,500,000
Total Expenses	14,549,898	12,736,261	13,862,921



Fonds engagés/ Committed Funds

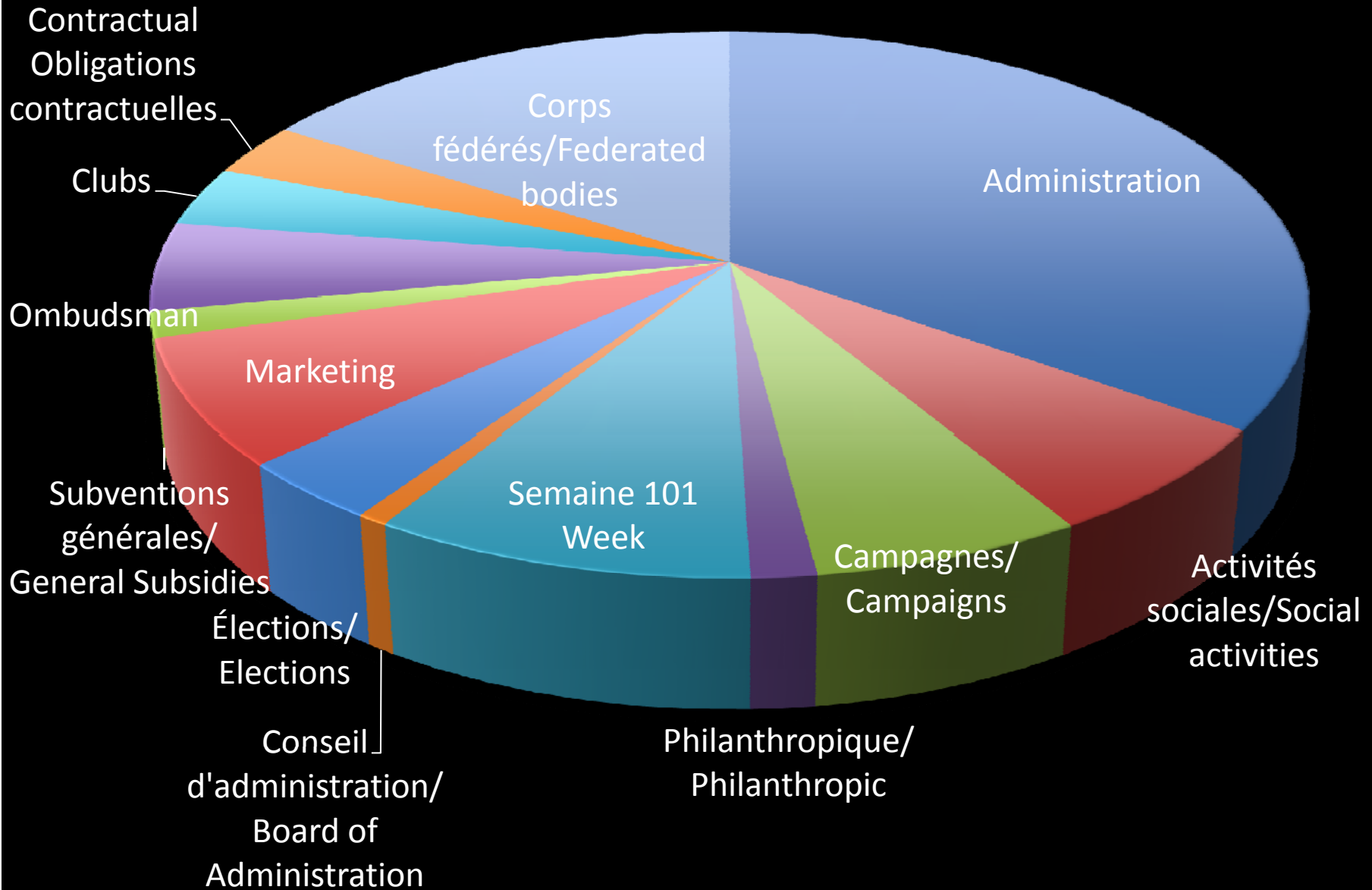
	Budget 2011	Actuels/ Actuals 2011	Budget 2012
Administration	\$632,300	\$485,958	\$559,362
Activités sociales/ Social activities Philanthropique/ Philanthropic	\$79,232	131,224	\$105,407
Conseil d'administration/ Board of Administration	\$27,670	25,967	\$25,420
Élections/ Elections	\$13,000	8,942	\$12,000
Subventions générales/General Subsidies	\$58,000	47,208	\$58,000
	\$25,000	\$22,110	\$25,000



Fonds engagés/ Committed Funds

	Budget 2011	Actuals 2011	Budget 2012
Marketing	\$119,395	\$98,913	\$119,298
Ombudsman	\$85,000	\$85,000	\$85,000
Clubs	\$60,000	\$42,514	\$56,682
Semaine 101/ 101 Week	\$84,696	\$230,624	\$148,475
Campagnes/ Campaigns	\$83,155	\$54,791	\$105,656
Obligations contractuelles/ Contractual Obligations	\$25,000	\$21,856	\$55,200
Corps fédérés/ Federated Bodies	\$237,069	\$224,122	\$256,822

Fonds engagés / Committed Funds





Autres cotisations/ Other Levies

CHUO	\$298,339
The Fulcrum	\$203,741
La Rotonde	\$203,741
OPIRG / GRIPO	\$272,703
Legal Aid Clinic / Clinique d'aide légale	\$198,924
Counselling service / Service de counselling	\$144,295
Career Services / Service des Carrières	\$112,637
CFS / FCÉE	\$274,005
CFS-Ontario / FCÉE-Ontario	\$228,337



Le Budget en résumé Budget Summary

	Budget 2011	Actuels/ Actuals 2011	Budget 2012
Total Revenues totales	14,898,859	13,105,015	14,133,848
Totale des dépenses/ Total Expenses	14,549,898	12,698,954	13,862,921
Revenues net/ Net income	348,961	406,061	270,926
Moins les commerces/Minus Businesses	317,311	180,939	261,245
“Safe” Balance	31,650	225,122	9,681



Vérifications des Corps fédérés Federated Body Audits

Fed. Bodies	Year 2009-2010			Year 2010-2011		
	1st	2nd	3rd	1st	2nd	3rd
Communication	yes	pending	pending	Na	NA	NA
Arts	yes	yes	yes	yes	yes	yes
CRIMINOLOGIE	yes	yes	yes	yes	yes	yes
PSYCHOLOGY	yes	yes	yes	NA	NA	NA
DROIT CIVIL	yes	yes	yes	yes	yes	NA
COMMON LAW	yes	yes	yes	yes	pending	pending
TELFER	yes	yes	pending	NA	NA	NA
HKSA	yes	yes	yes	yes	yes	pending
MEDICINE	yes	yes	yes	yes	yes	yes
Nursing Undergrad	yes	yes	yes	NA	NA	NA
Engineering	yes	yes	yes	NA	NA	NA
Science	yes	yes	yes	yes	yes	yes
Formation Enseignement	yes	yes	yes	yes	yes	NA
Teacher Education	yes	yes	yes	yes	yes	NA
Sociologie	yes	yes	yes	NA	NA	NA
Political studies	yes	yes	yes	NA	NA	NA
Economics	yes	NA	NA	NA	NA	NA
CSSA computer science	yes	NA	NA	NA	NA	NA
Health science	yes	yes	Na	yes	yes	NA
Women's studies	NA	NA	NA	NA	NA	NA
Conflict Studies	yes	yes	yes	yes	yes	NA
Nutrition	yes	yes	yes	yes	yes	NA
Travail Social	yes	yes	yes	yes	yes	yes

Excellent!

Arts
Crim
Medicine
Science
Travail Social

Recurrent Problems

Communication
Psychology
Telfer
UNSA
ESS
SASA
PIDSSA
Economics
CSSA
WSSA



Motion approuvée Passed

QSRQ le conseil d'administration approuve la proposition des projections budgétaires pour l'année fiscale débutant le 1^{er} mai 2011 et se terminant le 30 avril 2012, en suivant la recommandation de la V-p aux finances, de l'exécutif de la FÉUO, et du comité de finances.

BIRT the Board of Administration approve the submission of the budget estimates for the fiscal year May 1, 2011 to April 30, 2012 based on the recommendation of the SFUO Vice-President Finance, the SFUO executive and the Finance Committee.